

## FOLK DANCE RUG

**Design:** Lankava Oy, Jennika Jokinen

**Finished size:** approx. 75x200 cm

**Weave structure:** rosepath and plain weave

**Warp/meter:** 90 g of Liina Cotton Twine, 15-ply (tex 30x15), in Undyed (1).

**width:** 83.5 cm

**threads/cm:** 2

**reed:** 20/1

**total threads:** 167+2

**Base weft/1 rug:** Lilli Tube Yarn by Lankava: 1.1 kg in Undyed (2), 0.4 kg in Light grey (16), 0.3 kg in Black (20) and 0.3 kg in Grey (17).

**Pattern weft/1 rug:** Paulina Chunky Twine by Lankava: 0.5 kg in Grey (67) and 0.4 kg in Undyed (52).

**Weft threads/cm:** 3

**Instructions:** Double the outermost 2 threads. Wet and dry the tube yarn before use. Follow the written instructions and the pictures to create the rosepath patterns on the plain weave. Note: The treadling is marked in full for Pattern 1, but the treadling for Patterns 2-6 only shows the pattern wefts. Still, keep working as in Pattern 1, where every other weft shot is in plain weave. When changing pattern, make sure that the plain weave continues with the correct treadle as well.

Begin and end by weaving 6 shots of plain weave with the Cotton Twine. Weave 6 cm in plain weave using the Black Lilli Tube Yarn. Then, 1 shot with undyed Paulina Twine, according to the treadling picture, and 2 cm plain weave with Black Lilli. Weave Pattern 1, using Undyed Lilli and Grey Paulina. Work Pattern 1 three times, as shown in the treadling. Then, work in plain weave: 6 cm with Undyed, 2 cm with Black and 2 cm with Light Grey Lilli. Weave Pattern 2 with Light Grey Lilli and Undyed Paulina. Continue in plain weave: 2 cm with Light Grey, 2 cm with Black, 8 cm with Undyed and 2 cm with Grey Lilli. Weave Pattern 3, using Grey Lilli and Undyed Paulina. Work in plain weave: 2 cm with Grey, 8 cm with Undyed and 1.5 cm with Light Grey Lilli. Then, 1 shot with undyed Paulina, according to the treadling picture. Continue 2.5 cm in plain weave with Light Grey Lilli. Weave Pattern 4, using Light Grey Lilli and Undyed Paulina. Work in plain weave: 2.5 cm with Light Grey Lilli and, as before, 1 shot with undyed Paulina. Continue in plain weave: 1.5 cm with Light Grey and 4 cm with Undyed Lilli. Weave Pattern 5, using Undyed Lilli and Grey Paulina. Work Pattern 5 three times. Continue in plain weave: 4 cm with Undyed, 2 cm with Black and 5 cm with Grey Lilli. Weave Pattern 6, using Grey Lilli and Undyed Paulina. At the end of the treadling (marked with P), start working the whole treadling backwards as a mirror image (continue Pattern 6 with treadles 4, 5, 6, etc.)

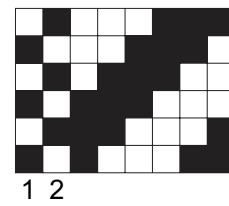
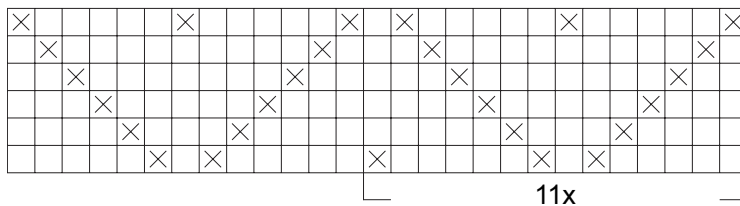
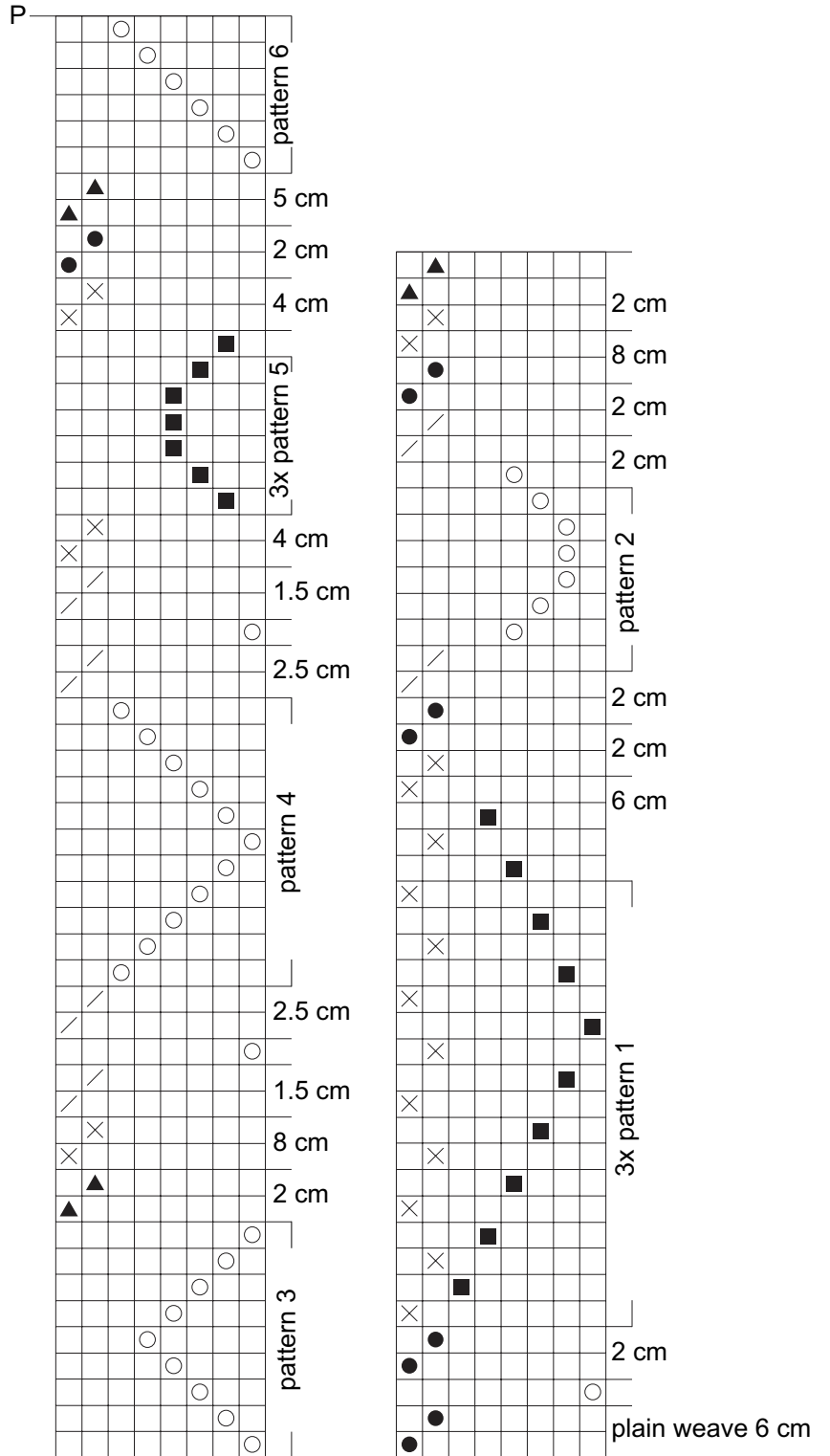
Begin and end by weaving 6 shots of plain weave with the Cotton Twine. Weave 6 cm in plain weave using the Black Lilli Tube Yarn. Then, 1 shot with undyed Paulina Twine, according to the treadling picture, and 2 cm plain weave with Black Lilli. Weave Pattern 1, using Undyed Lilli and Grey Paulina. Work Pattern 1 three times, as shown in the treadling. Then, work in plain weave: 6 cm with Undyed, 2 cm with Black and 2 cm with Light Grey Lilli. Weave Pattern 2 with Light Grey Lilli and Undyed Paulina. Continue in plain weave: 2 cm with Light Grey, 2 cm with Black, 8 cm with Undyed and 2 cm with Grey Lilli. Weave Pattern 3, using Grey Lilli and Undyed Paulina. Work in plain weave: 2 cm with Grey, 8 cm with Undyed and 1.5 cm with Light Grey Lilli. Then, 1 shot with undyed Paulina, according to the treadling picture. Continue 2.5 cm in plain weave with Light Grey Lilli. Weave Pattern 4, using Light Grey Lilli and Undyed Paulina. Work in plain weave: 2.5 cm with Light Grey Lilli and, as before, 1 shot with undyed Paulina. Continue in plain weave: 1.5 cm with Light Grey and 4 cm with Undyed Lilli. Weave Pattern 5, using Undyed Lilli and Grey Paulina. Work Pattern 5 three times. Continue in plain weave: 4 cm with Undyed, 2 cm with Black and 5 cm with Grey Lilli. Weave Pattern 6, using Grey Lilli and Undyed Paulina. At the end of the treadling (marked with P), start working the whole treadling backwards as a mirror image (continue Pattern 6 with treadles 4, 5, 6, etc.)

**Finishing:** Use overhand knots to tie 2 warp yarns together to make fringes. Braid 3 fringes together to make c. 10 cm long braids. Secure each braid with a tight overhand knot. Cut the ends to even length.

**Care:** Regular vacuum cleaning and airing. When washing the rug, first wet the rug in warm water. Mix a detergent into hot water. Spread it onto the rug and scrub with a soft brush, working parallel to the stripes and on both sides. Rinse with plenty of water and hang to dry, so that the water runs from the rug parallel to the stripes.



Any commercial use of this pattern is prohibited.



Any commercial use of this pattern is prohibited.