

BREEZE PANEL CURTAINS

Design: Lankava Oy, Anne Hameri

Finished size: 50 x 250 cm

Weave structure: plain weave

Warp/meter: 70 g of Bockens Tow Linen 8 in ½-bleached (0002) (100% linen, tex 206, 250 g = approx. 1,400 m). For the edge threads: 1 g of Bockens Cottolin 22/2 in ½-bleached (2001) (60% cotton, 40% linen, tex 80x2, 250 g = approx. 1,440 m).

width: 53 cm

threads/cm: 4, 8, and 12

reed: 40/1, 2, 3

total threads: 356

Weft/1 curtain: 150 g of Bockens Tow Linen 8 in ½-bleached (0002).

Weft threads/cm: 8

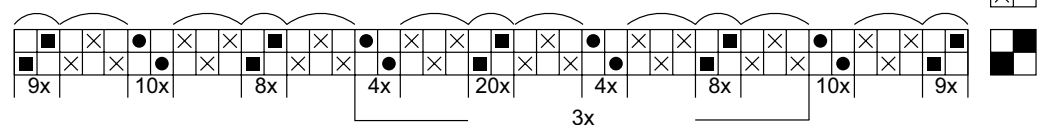
Instructions: When making the warp, use Cottolin for the first 2 and last 2 threads, to make the edges more durable. If you warp from the back, separate the threads into the raddle as follows: 6, 6, 8, i.e. 6 threads in 1 slot twice, 8 threads in the next slot. Thread the heddles as you would for any plain weave. Then sley the reed as shown in the picture: 18 threads in pairs (= 2 threads/dent), 3 threads in the next dent, then 20 threads singly (=1 thread/dent). Repeat the following 3 times: 3 threads/dent, 16 threads in pairs, 3 threads/dent, 8 threads singly, 3 threads/dent, 40 threads in pairs, 3 threads/dent, 8 threads singly. Then, 3 threads/dent, 16 threads in pairs, 3 threads/dent, 20 threads singly, 3 threads/dent, 18 threads in pairs. Weave for 270 cm, according to the treadling picture. (For a different length: count the desired length + hems + 5% for shrinkage.)

Finishing: Sew the raw edges with a multi stitch zig zag. Iron the fabric with plenty of steam and a heat suitable for linen. Let dry. Measure 250 cm of the fabric and divide the additional length for the hems so that the bottom hem is wider, e.g. 5 cm for the bottom and 3 cm for the top, both with a 1 cm inner fold. Steam the finished curtain.



Sleying the reed

- = 2 threads/dent
- × = 3 threads/dent
- = 1 thread/dent



Any commercial use of this pattern is prohibited.