

## TREE BARK TOWELS

**Design:** Lankava Oy, Katja Hynninen

**Finished size:** appr. 48x70 cm or 80x150 cm

**Weave structure:** chrystal pebble weave, twined twill, spot bronson or pebble weave

**Warp/meter:** mercerised Merssi cotton yarn 8/2, tex 76x2 (100 % CO, 1 kg = appr. 6500 m) 95 g for hand towel and 150 g for sauna towel, Black (3)

- **width:** hand towel 52,4 cm, sauna towel 82 cm
- **threads/cm:** 10
- **reed:** 50/2
- **total threads:** hand towel 524, sauna towel 820

**Weft/towel:** Bockens tow linen yarn 6, tex 280 (100 % LI, 250 g = appr. 1050 m) 125 g Undyed, half-bleached or dyed.

**Weft threads/cm:** 10

**Instructions:** Choose warp width and weave structure and create warp accordingly. Weave 80 cm cloth pieces for hand towels and 165 cm pieces for sauna towels. Throw in a different coloured yarn between cloths as a marker for cutting.

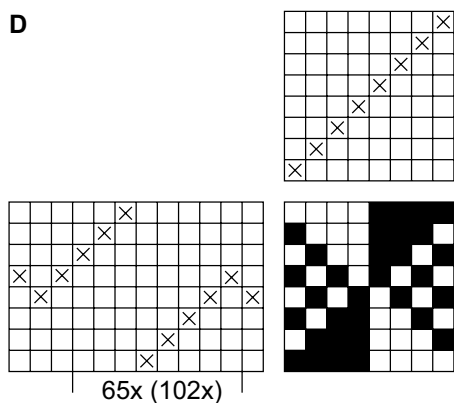
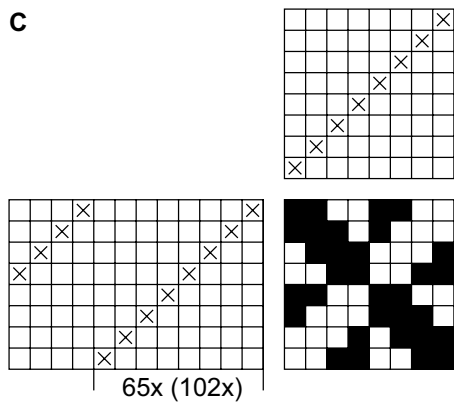
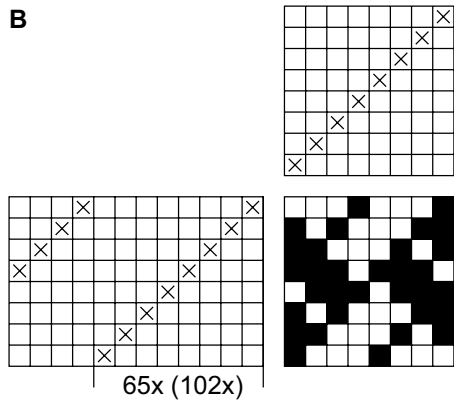
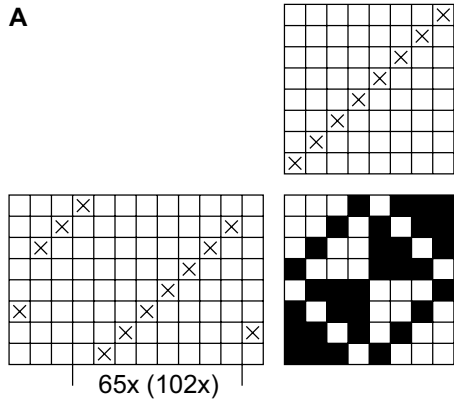
**Finishing:** Tidy up cloth ends. Sew a 1 cm hem to hand towels, 1,5 cm to sauna towels. Sew

a hanging loop on one of the long sides of the towels. Wash the towels at 40°C delicate wash with bleach-free detergent before 1<sup>st</sup> use. Do not use fabric softener. Steam iron on a linen setting.

**Washing and caring:** Coloured wash at 50-60°C with bleach-free detergent, separate from other items and without fabric softener.



Any commercial use of this pattern is prohibited.



Any commercial use of this pattern is prohibited.