

## MACRAME DOOR CURTAIN

**Design:** Suuri Käsityö magazine, Outi Hakkarainen

**Yarn:** Paulina chunky twine (80 % cotton, 20 % polyester, 1 kg = appr. 170-180 m) 2 kg Black (70).

**Other supplies:** 9 wooden beads with large holes and a sturdy dowel rod, length min. 85 cm.

**Instructions:** Cut 45 pcs of 7 meter cords. Fold the cords in the middle and tie to the rod with Lark's Head Knots (pic 1).

Make one row of Double Half Hitches around the holding cord (pics 2-3).

Tie 6 rows of Square Knots (pics 4-6) but on every other row, tie Alternating Half Hitch Knots with the outermost cords (pics 7-10).

Tie a row of Double Half Hitches around the new holding cord. Divide cords into five groups, 18 cords/group. Tie 5 triangles to the bottom with Diagonal Double Half Hitches (pics 11-12).

Tie Square Knots to the points of the triangles and then Alternating Half Hitch Knots with the middle cords. Thread the beads to the points of the triangles and to the edge cords and tie them into place with Overhand Knots (pics 13-14).



Photo: Mikko Hannula



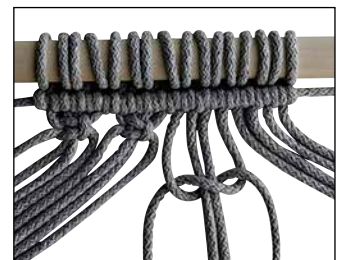
**1. Lark's Head Knot:** Fold the yarn in the middle, take under rod and thread ends through loop.



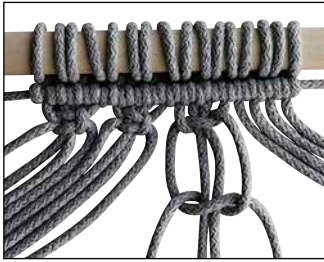
**2. Double Half Hitch Knot:** Pick up a separate cord, keep it horizontal and tie Double Half Hitch Knots around it. Take the cord coming from the rod under and around the horizontal cord and through the loop.



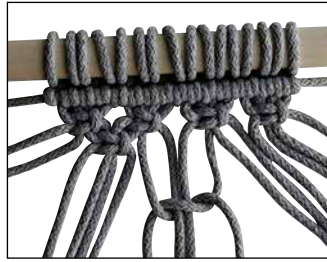
**3.** Make another knot in the same way with the same cord and tighten both knots to the rod.



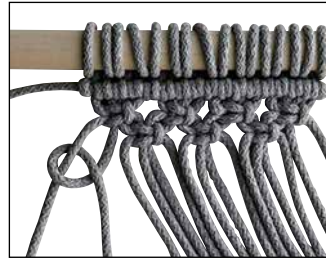
**4. Square Knot:** Pick up 4 adjoining cords. Pull the cord on the right over the middle cords and under the left cord. Take the left cord under the middle cords and over the right cord. Tighten knot.



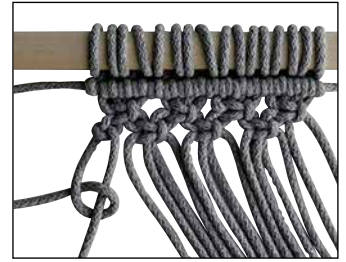
**5.** Make the second stage in mirror image: Take the right cord under the middle cords and over the left cord. Take the left cord over the middle cords and under the right cord. Tighten knot.



**6.** To create a web effect, tie the knots on the following row in an overlapping manner in relation to the previous row. Leave the 2 outermost cords waiting.



**7. Alternating Half Hitch Knot:** Tie the knots with the outermost cords. Keep the outermost cord straight, move the other cord over and around it and take the end through the loop. Tighten the knot.



**8.** Keeping the other cord straight, move the outermost cord over and around it and take the tail end through the loop. Tighten the knot.



**9.** Tie similar knots in the two cords at the other end but in mirror image. Keep the outermost cord straight and move the other cord over and around it. Take the tail end through the loop. Tighten knot.



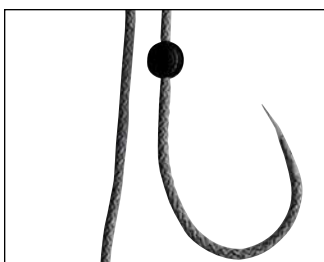
**10.** Keeping the other cord straight, move the outermost cord over and around it and take the tail end through the loop. Tighten the knot.



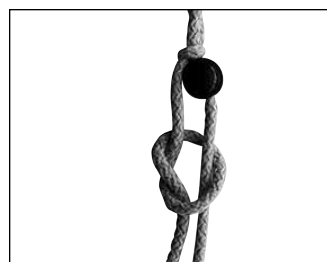
**11. Diagonal Double Half Hitch:** Tie as regular Double Half Hitch, but tighten them around a diagonal holding cord. Pick the outermost cord of the group as holding cord.



**12. Double Half Hitches from left to right:** Tie as before but in mirror image.



**13.** Fasten beads to the points of the triangles. To help the threading of the beads to the cord, wind sticky tape around the cord end.



**14.** Tie Overhand Knots above and under the beads.

Any commercial use of this pattern is prohibited.