

LEMMIKKI BLANKET

Design: Lankava, Marja Rautiainen.

Size: Approx. 100x140 cm / 39.25x55".

Yarn: Lankava Mini Tube Yarn (80 % recycled cotton, 20 % polyester, 1 kg = approx. 355 m / 388 yds) 2 kg in light blue (18).

Needles: 9 mm / US 13 circular needle, 100 cm / 40", or size to obtain gauge.

Stitch pattern: Work flat following the chart. Always slip the first st and purl the last st of a row.

Gauge: 11 sts and 14 rows = 10 cm / 4".

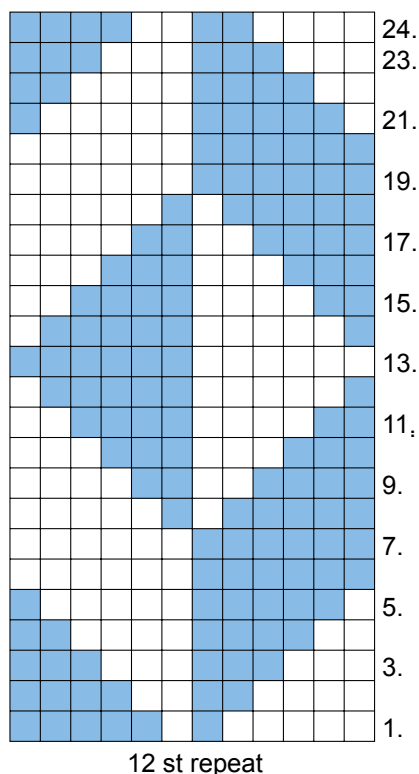
Abbreviations: BO = bind off, CO = cast on, K = knit, P = purl, RS = right side, sl = slip, st(s) = stitch(es), WS = wrong side

Instructions: CO 110 sts.

Row 1 (RS): K110 and turn work. Begin working in the stitch pattern following the chart.

Row 2 (WS): Sl1 and bring yarn to the back of the work, *K5, P1, K1, P5*, repeat *-* 8 times more, P1 and turn work.

Row 3: Sl1, *K4, P2, K2, P4*, repeat *-* 8 times more, P1 and turn work. Continue following the chart and repeat Rows 1-24 until the work measures approx. 140 cm / 55" and you have last worked either Row 12 or Row 24. At the end, K to end from the WS, then turn work and BO sts purlwise. Weave in the ends.



= K1 on RS, P1 on WS
 = P1 on RS, K1 on WS

Any commercial use of this pattern is prohibited.

