

POHJANTÄHTI RUG



Design: Lankava, Mia Lehtiniemi.

Finished size: 75x195 (128x195) cm.

Structure: Overshot.

Warp/m: 80 (140) g Black (80) Liina Cotton Twine, tex 30x12 (100 % cotton, 1 kg = 2560 m).

- **width:** 84,4 (144,4) cm
- **sett:** 2,5 ends per cm
- **reed:** 1 end per dent in a 25-dent reed or 1-0 per dent in a 50-dent reed
- 211+4 (361+4) **ends total**

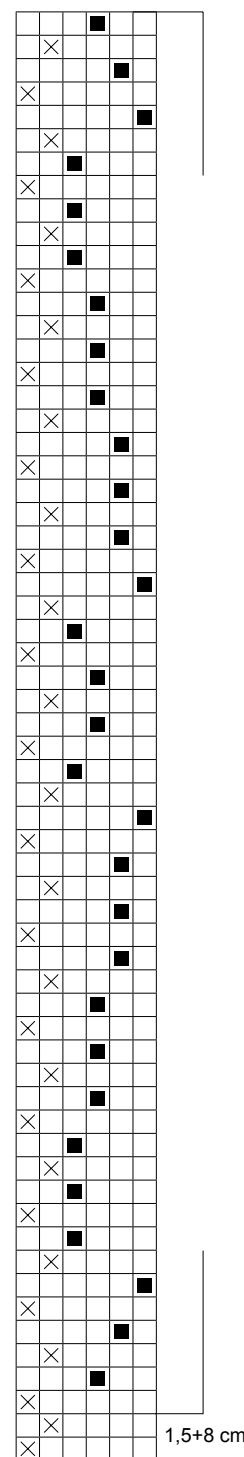
Tabby weft/rug: 1 (1,8) kg Milk Chocolate (5) Lankava Mini Tube Yarn (80 % recycled cotton, 20 % polyester, 1 kg = approx. 355 m).

Pattern weft/rug: 2 (3,5) kg Greige (37) Lankava Lilli Tube Yarn (80 % recycled cotton, 20 % polyester, 1 kg = approx. 220 m).

Sett: 3 picks per cm. 4 picks per cm in the hems.

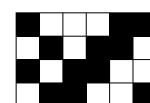
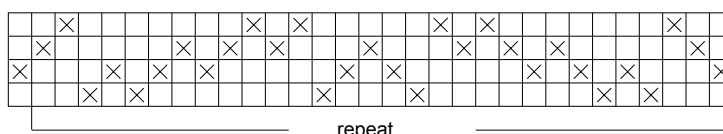
Weaving: Use the outermost double warp ends as floating selvedges. Pass your weft over the floating selvedge as you enter the shed with your shuttle, and under the floating selvedge as the shuttle exits the shed. At the beginning and end of the rug, weave a 1,5 cm inner hem allowance with the warp thread and an 8 cm outer hem allowance with the Mini Tube Yarn. Weave approx. 200 cm with two shuttles repeating the treadling order.

Finishing: Tie the warp threads in pairs using overhand knots and trim the fringes. Sew the hems by hand with cotton twine, making them approximately 4 cm wide with a 1,5 cm inner allowance.



Treadling

- Pattern weft
- × Tabby wef



Any commercial use of this pattern is prohibited.