

# BEDCHAMBER RUG

Something new, something old. The plush surface of the Kammari rug is made from recycled cotton weft, loopy and tube yarns. The colors and design are inspired by Lankava's early days.





# BEDCHAMBER RUG

**Level of difficulty:** Intermediate.



**Design:** Lankava, Mia Lehtiniemi.

**Finished size:** 79x190 cm.

**Structure:** Rosepath-inspired overshot.

**Warp/ m:** 80 g Powder (15) Liina 12-ply Cotton Twine, tex 30x12 (100 % cotton, 1 kg = 2560 m).

- **width:** 86 cm
- **sett:** 2,5 ends per cm
- **reed:** 1 end per dent in a 25-dent reed or 1-0 per dent in a 50-dent reed
- **ends total :** 219 (215+4)

**Tabby weft/rug:** 1,7 kg Light Old Rose (34) and 0,3 kg Beige (3) Lankava Eko Tube Yarn (80 % recycled cotton, 20 % polyester, 1 kg = approx. 270 m).

**Pattern weft/rug:** 2 kg Cocoa (55) Lankava Frotee Loopy Craft Yarn (80 % recycled cotton, 20 % polyester, 1,2 kg = 280 m).

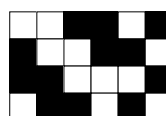
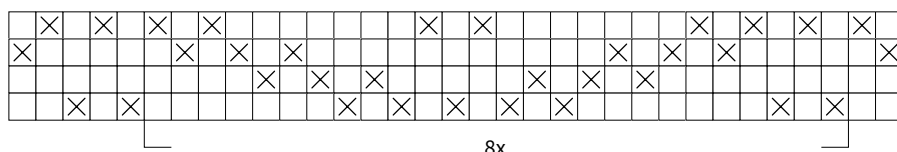
**Hems:** 110 g Milk Chocolate (5) Lankava Mini Tube Yarn (80 % recycled cotton, 20 % polyester, 1 kg = approx. 355 m). You can also weave the hems with Eko Tube Yarn using the hue Milk Chocolate (5).

**Sett:** 2 picks per cm.

**Weaving:** Use the outermost double warp ends as floating selvages. At the beginning and end of the rug, weave a 1,5 cm inner hem allowance with the warp thread and an 8 cm outer hem allowance with the Mini Tube Yarn. Note: Bubble the Mini Tube Yarn in the hems a bit more than usual. This way your hems won't become narrower than the rug itself. Weave approx. 200 cm repeating the treadling sequence in the draft.

**Finishing:** Tie overhand knots with two threads and trim the fringes shorter. Using cotton twine, hand sew approx. 4 cm wide hems with a 1,5 cm inner allowance.

**Threading:**



The treadling chart is on the next page.

