

## VILLAVA THROW

**Design:** Lankava, Marja Rautiainen

**Size:** 112x160 cm.

**Structure:** Fancy diamond twill

**Warp per m:** Lankava Villava Wool Yarn 3-Ply (100% Finnish wool, tex 180x3, 100 g=180 m) 280 g Natural White (1).

- Width in the reed: 124 cm
- Sett: 3,5 ends per cm
- 1 per dent in a 35-dent reed
- 435 ends total

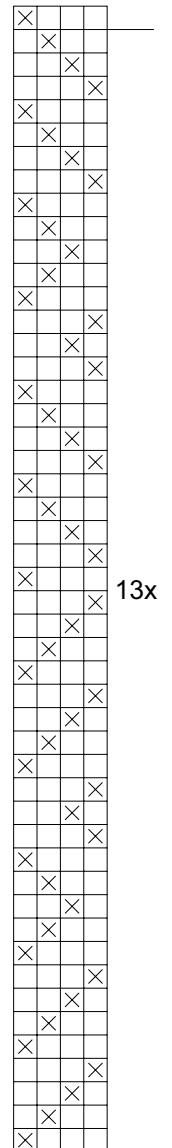
**Weft per blanket:** Lankava Villava Wool Yarn 3-Ply 450 g Grey (3) or Beige (6)

**Sett:** 3,5 picks per cm

**Instructions:** Leave the first and the last end unthreaded to make floating selvages. Sley 1 per dent in a 35-dent reed. Throw a shuttle always over the floating selvedge to the shed and under the floating selvedge as the shuttle exits the shed on the other side. Weave the blanket using one shuttle only and repeat the treadling draft 13 times (=178 cm total).

**Finishing:** Prepare a twisted fringe with 4+4 ends in each fringe. Trim the fringe. Wet-finish in lukewarm water by gently pressing. Use a wool detergent and a little bit of fabric softener but avoid using them too much.

Rinse thoroughly and air dry on a flat surface. Steam the finished blanket gently.



● = Floating selvages

