

## KARJALA RUG

US crochet terms used throughout.

Abbreviations:

st(s) = stitch(es)

ch = chain

sl st = slip stitch

dc = double crochet

**Design** Lankava, Eloise Boulerne

(www.atelier-kaisla.com)

**Finished size** 145x185cm

**Yarn** Lankava Mini Tube Yarn: 4kg in Undyed (2) and 2kg in Black (20) (80% recycled cotton, 20% polyester, 1kg = approx. 355m)

**Crochet hook** 5mm and 6mm (US H and J) (or size to obtain gauge)

**Gauge** 10.7 sts and 6 rows = 10cm

**Instructions** The rug is worked flat, using dcs and 2 colors according to the chart. Crochet around the color not in use so that it runs inside the sts. At each edge, do not crochet the non-working yarn inside the edge st, but leave it waiting on the wrong side, turn, and then work it again inside the 2nd st from the edge. When changing color, make the last yarn over of the previous dc with the new color. Check that the non-working yarn running inside the sts is not too loose.

**Beginning:** Ch 159 for the foundation chain in undyed. Note: If the foundation chain seems too loose, make it using the smaller hook (5mm / H).

**Row 1 (right side):** Dc in 4<sup>th</sup> ch from hook, take up the black yarn and make a dc in undyed in each st while working the black inside the sts, but make the last dc without the black = 156 sts. Turn work and remember to keep the black yarn at the wrong side of the work.

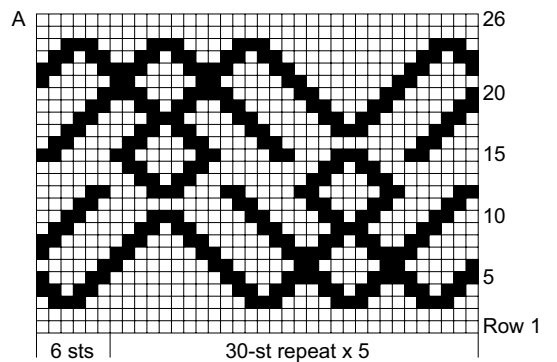
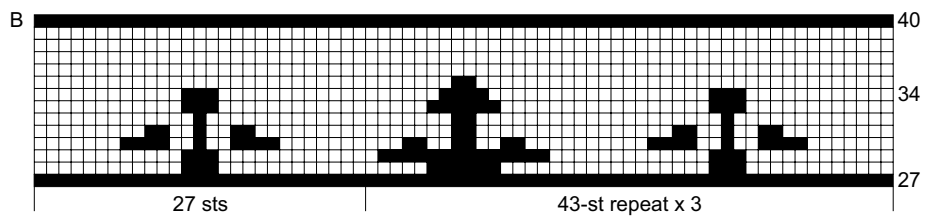
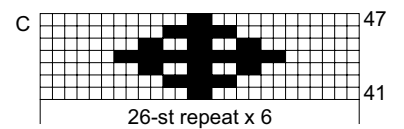
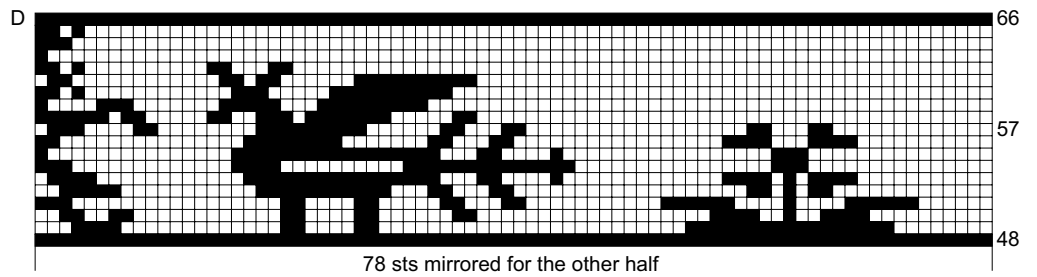
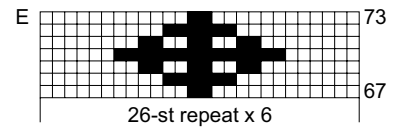
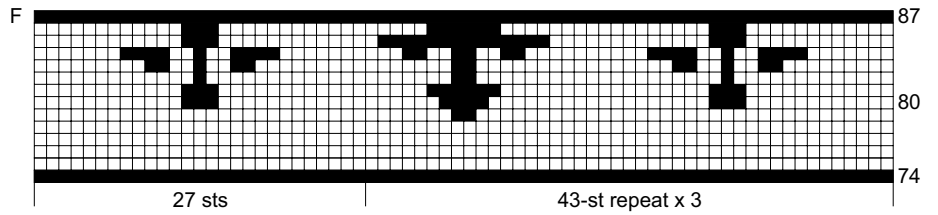
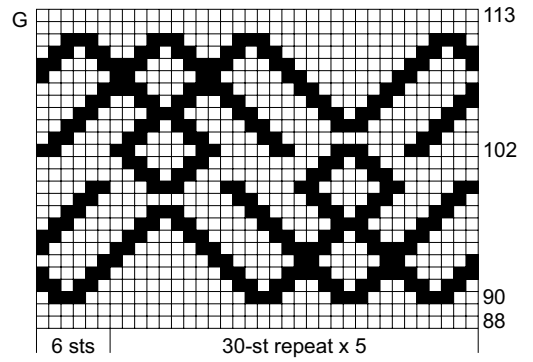
**Row 2:** Ch 3, dc in each st in undyed while working the black yarn inside the sts. Again, remember to make the last dc of the row without the black yarn and leave it on the wrong side of the work. Continue to work according to Chart A and make the 30-st repeat 5 times and end with the last 6 sts of the chart. After completing all 26 rows of this chart, continue to Chart B. Make the 43-st repeat 3 times and end with the last 27 sts. After completing this chart, move to Chart C and make the 26-st repeat 6 times. Next, make Chart D: first make the 78 sts of the chart and then work the other side of the rug in a mirror image (= work the chart again in the opposite direction from st 78 to st 1). Continue to work according to Charts E, F, and G = 113 rows. Turn work and make 1 row of sl sts. Cut yarn and weave in ends. Make 1 row of sl sts also into the foundation chain from the wrong side of the work.

**Finishing** Use the smaller hook to weave the yarn ends inside the sts.



Any commercial use of this pattern is prohibited.

□ = Undyed  
 ■ = Black



Any commercial use of this pattern is prohibited.