

BILBERRY BLANKET

Design: Lankava Oy, Marja Rautiainen

Finished size: 130x170 cm

Weave structure: combined plain weave and basket weave

Warp/ meter: Esito worsted blanket yarn (tex 143x3, 100% wool, 240 g= approx. 550 m) 120 g in Midnight blue (7066), 120 g in Blue (7063), and 120 g in Blueberry blue (7064).

- width: 140 cm
- threads/cm: 5
- reed: 50/1
- total threads: 702

Warping instructions:

5 threads in Midnight blue
 4 threads in Blue
 4 threads in Blueberry blue } 58x
 4 threads in Midnight blue
 1 thread in Midnight blue

Weft/ meter: Esito worsted blanket yarn (tex 143x3) 110 g in Midnight blue (7066), 110 g in Blue (7063), and 110 g in Blueberry blue (7064).

Weft threads/cm: 5

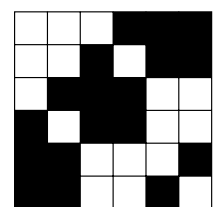
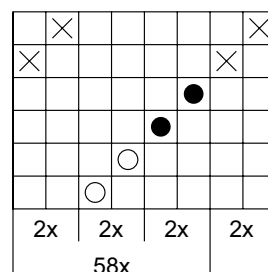
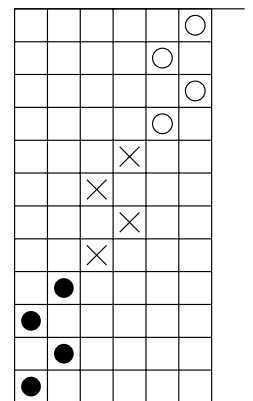
Instructions: Leave edge warp threads unthreaded (= a floating selvedge). Always enter the shed with the shuttle going over the floating thread and exit the shed under the floating thread. Weave for 190 cm, using three shuttles and repeating the treadling pattern. Begin a new color always from the same side (from left to right). This way each color begins and ends from the left edge. Do not cut the yarns not in use, leave them waiting and bind the previous color into the edge after 4 shots.

Repeat the following colors: 4 shots in Blue, 4 shots in Midnight blue, 4 shots in Blueberry blue.

Finishing: Make twisted fringes at each end with 4+4 threads. Cut fringe ends to even length.



- ⊗ = Midnight blue
- = Blue
- = Blueberry blue



Any commercial use of this pattern is prohibited.