

LEO CUSHION

Design: Lankava Oy, Molla Mills

Finished size: 17 x 45 cm

Yarn: Mini Tube yarn, 500 g in unbleached (2) and 500 g in black (20). 1 kg = approx. 355 m

Hook: 6 mm (US J/10), or according to personal gauge

Other supplies: Tubular inner cushion (17 x 45 cm), 50 x 140 cm piece of black cotton fabric to cover the inner cushion, 150 cm of 10 mm wide black cotton ribbon.

US crochet terms used throughout. Abbreviations: st(s) = stitch(es), ch = chain, sc = single crochet

Tapestry crochet: This piece is worked in a spiral (without closing the rounds), in scs with two colors. Run the color not in use inside the sts. Change to new color by making the yarn over of previous sts with the new color.

Instructions: Start with unbleached, leave a tail of 1.5 m for finishing the edge.

Ch 66 and close into a round with sc to the 1st chain (= 1st st of round 1).

Rnds 1-45: Start working in tapestry crochet:

Sc in next 2 sts with unbleached and crocheting around the black yarn, sc in next 3 sts with black. When changing the color, pull a bit on the yarn running inside the sts to make sure the yarn has the same tension as the work. Continue to work in a spiral using two colors, according to the chart.

After rnd 45, make one round of sl st in both the finishing and starting edge. Weave in ends.

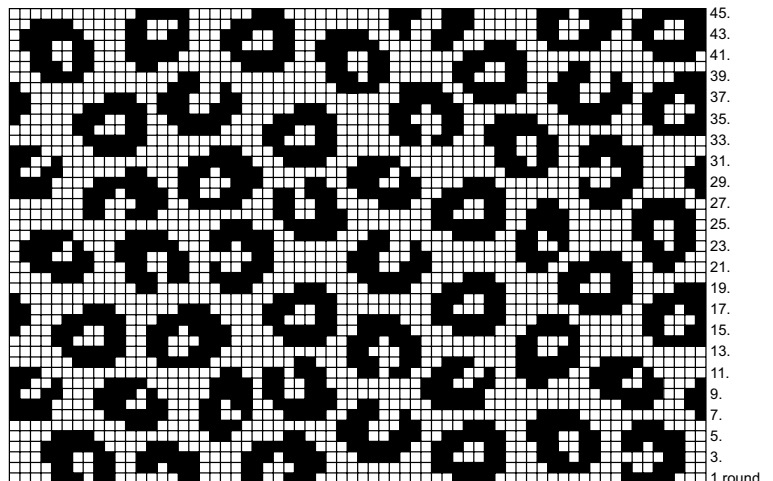
Covering the inner cushion:

Cut a 48 x 63 cm piece and two circles with 18 cm diameter from the black cotton fabric. Sew the long edges together but leave an opening in the middle with 1 cm seam allowance. Sew the circles to each end of the pillow. Turn the cover over and put the inner cushion inside. Sew the opening closed by hand.

Finishing:

Cut the cotton ribbon into 4 pieces. Sew a 0.5 cm fold to one end of each piece to stop it from fraying. Attach the unfinished edges to the crochet cushion cover, two on each end and on the opposite sides of the round edge.

Take the unfinished end through a stitch, fold 1 cm of the edge and sew it to the ribbon. Do this for all 4 ribbons. Put the inner cushion inside the crochet piece and tie the ribbons to keep the inner cushion in place.



□ = 1 sc in unbleached
 ■ = 1 sc in black

Any commercial use of this pattern is prohibited.