

## RIPPLES AND WAVES DOORMAT

**Design** Lankava Oy, Hillevi Lepistö

**Finished size** 70x50 cm

**Yarn** Mini tube yarn (80 % recycled CO, 20 % other fibres, appr. 1 kg = appr. 355 m) 500 g Petrol blue (27) and 500 g Cocoa brown (26).

**Hook** nr 7 (US L/11)

**Instructions** Ch 86 with Cocoa brown. Crochet through back loops.

**Row 1:** 1 slst to 2<sup>nd</sup> ch, 4 slst, \*5 hdc, 5 slst\*, repeat \*-\* to end of row, ch 1 for turning.

**Row 2:** 5 slst, \*5 hdc, 5 slst\*, repeat \*-\* to end of row but switch to Petrol blue with the last slst of row, ch 2 for turning.

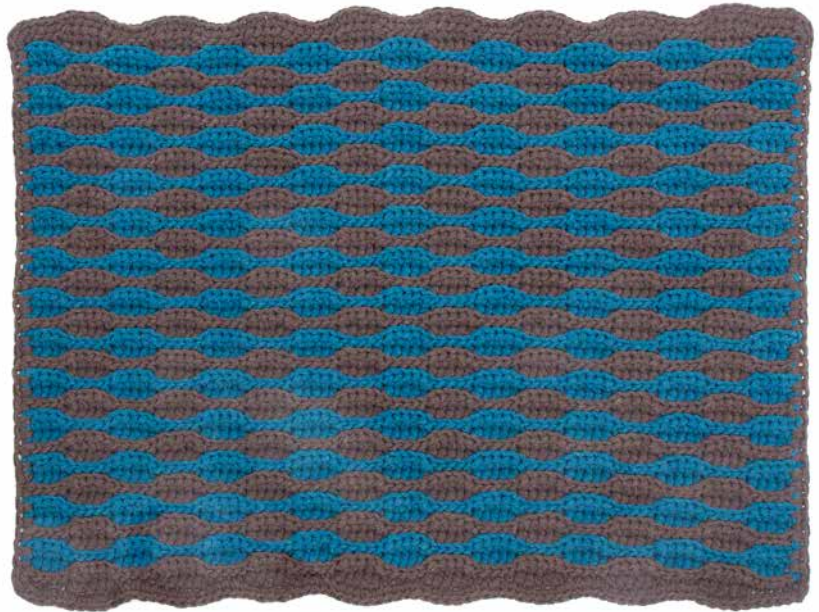
**Row 3:** 4 hdc, \*5 slst, 5hdc\*, repeat \*-\* to end of row, ch 2 for turning.

**Row 4:** 4 hdc, \*5 slst, 5 hdc\*, repeat \*-\* to end of row. Switch to brown at end of last hdc, ch 1 for turning. Crochet in the end of the brown yarn into the stitches on the next row.

**Row 5:** 5 slst, \*5 hdc, 5 slst\*, repeat \*-\* to end of row, ch 1 for turning.

Repeat rows 2-5 until the work measures appr. 48 cm and you have crocheted 2 rows with brown. Do not cut yarn. Continue by crocheting a border to the rug, simultaneously crocheting in the yarns ends into the stitches.

On each long side, crochet 1 sc to each st, on the short sides 1 sc to each hdc-row and 1 sc between slst-rows (3 scs/4 rows) and 2 sc into same st at the corners. Cut and finish off yarns.



Any commercial use of this pattern is prohibited.