



MINT BLANKET

Design: Lankava Oy, Marja Rautiainen

Finished size: 130x180 cm

Weave structure: cross twill

Warp/ meter: 290 g of Esito worsted blanket yarn in Undyed (7000) (tex 143x3, 100% wool, 240 g= approx. 550 m).

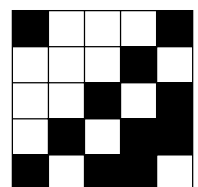
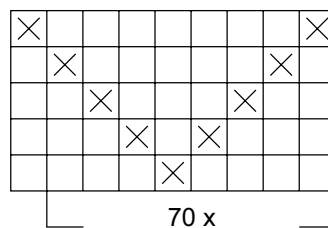
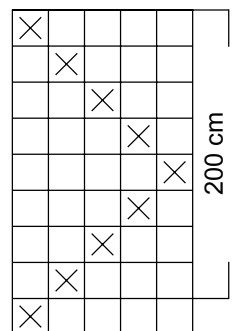
- width: 140 cm
- threads/cm: 4
- reed 40/1
- total threads: 561

Weft/ 1 blanket: 520 g of Esito worsted blanket yarn in Sea green (7051) (tex 143x3, 100% wool, 240 g= approx. 550 m).

Weft threads/cm: 4

Instructions: Weave for 200 cm repeating the treadling pattern.

Finishing: Make twisted fringes at each end using 4+4 threads. Cut fringe ends to even length.



Any commercial use of this pattern is prohibited.